

Port Townsend Condominiums
 were \$128,500 to \$169,000
SALE - \$99,000 to \$125,000

1930 Lawrence Street

1 & 2 bedroom units available

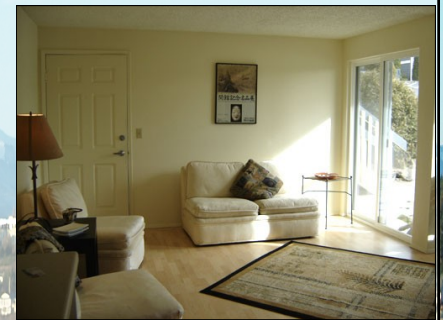
- Located Uptown Port Townsend
- Views of Kah Tai Lagoon, PT Bay & Mtns
- Come see our furnished models

OWN IT FOR \$764.07 a month
\$3465 Down Payment - Call or stop by for details

Approved for FHA financing ~ VA & USDA Financing



What a great place to hang your hat while in Port Townsend! Whether visiting for the weekend, on vacation, or wanting to make Port Townsend your home and become part of the local fabric, these condos offer an affordable way to have a safe and almost maintenance-free lifestyle. You'll be just minutes from the Uptown & Downtown eateries, shops, movie theatres, & festival happenings. Easier still - ask about a furnishing package.



www.olympicviewterrace.com



Richard Hild

Associate Broker

360-379-4559

360-531-1889

800-308-7884

richhild@olympen.com

www.richardhild.com

~ Open House ~

Sat 10 to 3

Sun 12 to 3

John L. Scott
 REAL ESTATE
 Port Townsend

Approved for FHA ~ VA & USDA Financing

MLS	Address	Street	Unit #	2010 RE Tax	APN	Bth	Bdrm	Price	Floor No Of Unit	Monthly HOA	Parking #'s	Sq Ft
* 28028819	1930	Lawrence St	A31	986	978200131	1	1	139,000	1	91	27	493
4961***	1930	Lawrence St	A33	975	978200133	1	1	139,000	1	91	4	482
* 28028829	1930	Lawrence St	A34	975	978200134	1	1	139,000	1	91	5	493
29129942	1930	Lawrence St	A35	1116	978200135	1	2	159,000	1	108	25	587
28028843	1930	Lawrence St	A40	1064	978200140	1	1	149,000	2	91	7	493
29015477	1930	Lawrence St	B15	987	978200215	1	1	128,500	1	91	18	494
* 28028799	1930	Lawrence St	B16	948	978200216	1	1	128,500	1	91	19	494
21487	1930	Lawrence St	B21	1065	978200221	1	1	138,500	2	91	35	494
21588	1930	Lawrence St	B23	1065	978200223	1	1	139,000	2	91	31	494
29014145	1930	Lawrence St	B24	1065	978200224	1	1	159,000	2	91	30	494
29147290	1930	Lawrence St	C2	1078	978200302	1	2	125,000	1	108	10	588
* 28028777	1930	Lawrence St	C3	1078	978200303	1	2	159,000	1	108	12	588

*Furnished Model ***Under Contract

Effective date 5/04/10